



© Miran Kambi?

The building's exterior already testifies to the fact that it houses a car showroom: the curves of the prefabricated metal shield imitate a car body. The facade is simple and elegant, as if designed according to „streamline“ principles. In the suburbs, where various commercial buildings compete for attention, INTEGRA's attraction lies above all in its elegance. The interior surprises the visitor with its large volume and suspended mezzanine floor, seemingly hovering in the middle of the space.

## Car Showroom Integra

Ptujska cesta 176  
2000 Maribor, Slowenien

ARCHITEKTUR

**Nande Korpnik**

BAUHERRSCHAFT

**Integra Maribor d.o.o.**

FERTIGSTELLUNG

**1998**

SAMMLUNG

**Architekturarchiv Slowenien**

PUBLIKATIONSdatum

**9. März 2006**



## Car Showroom Integra

### DATENBLATT

Architektur: Nande Korpnik

Bauherrschaft: Integra Maribor d.o.o.

Fotografie: Miran Kambi?

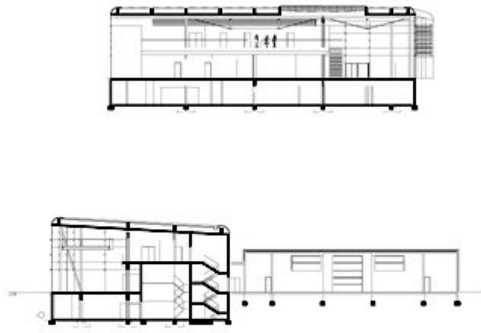
Maßnahme: Neubau

Funktion: Konsum

Planung: 1997 - 1998

Ausführung: 1997 - 1998

Car Showroom Integra



section