



© Miran Kambi?

The residential complex is located in the direct vicinity of Plečnik's St. Francis of Assisi Church in the town district of Šiška. The architects let the church retain its dominant role, using it as a scenic backdrop for their own design. The two blocks of flats are positioned so as to create an intermediary garden space, which serves as a focal point for the complex, and as a filter between the two blocks. The residential complex, indeed the whole neighbourhood, is completely removed from the traffic, and parking is organised in the basement. It is recognisable above all for its facade: the warm colours of the earth and the regular, while at the same time varied, geometrical fenestration make a strong impression. The architects tried to control the material image of the buildings by developing a single facade detail (window - facade cladding - sun-protection), which is repeated in variations all over the building.

Residential complex at Šiška

Aljaževa ulica
1000 Ljubljana, Slowenien

ARCHITEKTUR
Bevk Perovič arhitekti

BAUHERRSCHAFT
Rudis Trbovlje

FERTIGSTELLUNG
2001

SAMMLUNG
Architekturarchiv Slowenien

PUBLIKATIONSDATUM
26. Februar 2006



Residential complex at Šiška

DATENBLATT

Architektur: Bevk Perovič arhitekti (Matija Bevk, Vasa J. Perovič)

Mitarbeit Architektur: Mitja Zorc, Jernej Bevk, Jana Kocbek

Bauherrschaft: Rudis Trbovlje

Fotografie: Miran Kambič

Maßnahme: Neubau

Funktion: Wohnbauten

Ausführung: 1999 - 2001

Bruttogeschossfläche: 3.000 m²

PUBLIKATIONEN

Architektur aktuell, No. 5/2002, May 2002

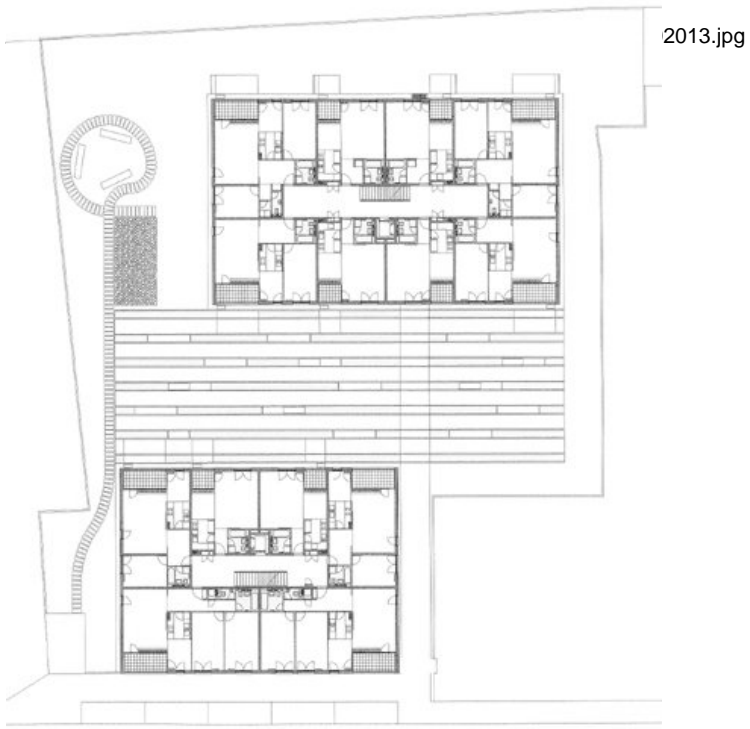
In nextroom dokumentiert:

Matevž Celik: New Architecture in Slovenia, SpringerWienNewYork, Wien 2007.

architektur.aktuell 05.2002 towers & blocks, SpringerWienNewYork, Wien 2002.

AUSZEICHNUNGEN

Plečnik's Award 2002



Residential complex at Šiška

situation ground floor