



© Blaž Budja

## Linde M.P.A. Office Building

1000 Ljubljana, Slowenien

ARCHITEKTUR  
**Matej Vozli?**  
**Vesna Vozli?**

BAUHERRSCHAFT  
**Linde MPA d.o.o.**

FERTIGSTELLUNG  
**2002**

SAMMLUNG  
**Architekturarchiv Slowenien**

PUBLIKATIONSdatum  
**19. Februar 2006**



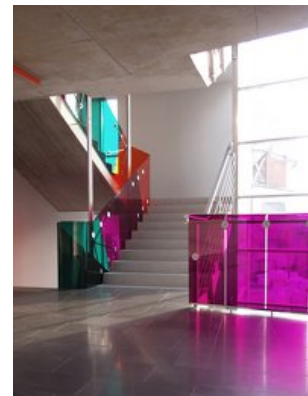
The building is situated on a fairly unfavourable location in the middle of a degraded industrial zone on the outskirts of Ljubljana. The architect tried to protect the contents against the environment, and so created a rather introverted building. On the first floor, in front of the main facade, is a closed patio to which the majority of offices are oriented. The patio, with its pool, greenery and wooden floor, creates an artificial external ambience to the building. The greyness of the surroundings is enlivened by vivid ornamentation made of coloured plexi-glass on the balcony and the staircase. The basement is intended for parking, the first two storeys above it for commercial premises, and the top floor has two squash courts for recreation and relaxation.



© Matej Vozli?



© Blaž Budja



© Matej Vozli?

## Linde M.P.A. Office Building

### DATENBLATT

Architektur: Matej Vozli?, Vesna Vozli?

Mitarbeit Architektur: Tomaž Slak, Klemen Vodnik

Bauherrschaft: Linde MPA d.o.o.

Maßnahme: Neubau

Funktion: Büro und Verwaltung

Planung: 1999 - 2001

Ausführung: 2001 - 2002

Bebaute Fläche: 2.200 m<sup>2</sup>

Baukosten: 850.000,- EUR

### PUBLIKATIONEN

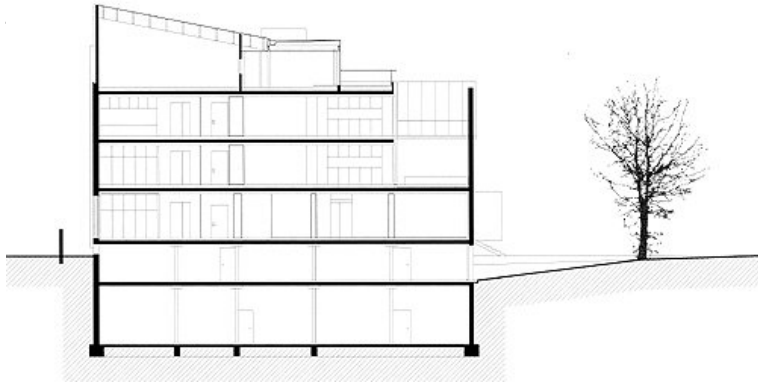
Matevž Celik: New Architecture in Slovenia, SpringerWienNewYork, Wien 2007.

architektur.aktuell 03.2003 simulation, SpringerWienNewYork, Wien 2003.



© Blaž Budja

**Linde M.P.A. Office Building**



section