



© Miran Kambi?

The location is defined by the natural forest landscape. The typology of the building is derived from a decomposed introverted structure - two U-shaped volumes, turned back-to-back facing the outside, connecting with the surroundings. The entry part of the volume which faces north, closer to the road, is intended for the semi-public activities of the school, while the second part of the complex is intended for classrooms and faces south, towards the greenery. The school is a rational, productive and generic system, located in a natural environment, so that it subconsciously creates a certain degree of symbiosis - a second nature.

## Elementary School „Ob Rinži“

Cesta v Mestni log 39  
1330 Kočevje, Slowenien

ARCHITEKTUR

**Nicholas Dodd**

**Tadej Glažar**

**Arne Vehovar**

**Vasa J. Perovič**

BAUHERRSCHAFT

**Community of the Town of Kočevje**

LANDSCHAFTSARCHITEKTUR

**Ana Kučan**

FERTIGSTELLUNG

**2002**

SAMMLUNG

**Architekturarchiv Slowenien**

PUBLIKATIONSDATUM

**19. Februar 2006**



**Elementary School „Ob Rinži“**

DATENBLATT

Architektur: Nicholas Dodd, Tadej Glažar, Arne Vehovar, Vasa J. Perovič

Mitarbeit Architektur: Matija Bevk, Božo Rozman, Gašper Zalar

Bauherrschaft: Community of the Town of Kočevje

Landschaftsarchitektur: Ana Kučan

Fotografie: Miran Kambič

Maßnahme: Neubau

Funktion: Bildung

Wettbewerb: 1996

Planung: 1996 - 2002

Fertigstellung: 2002

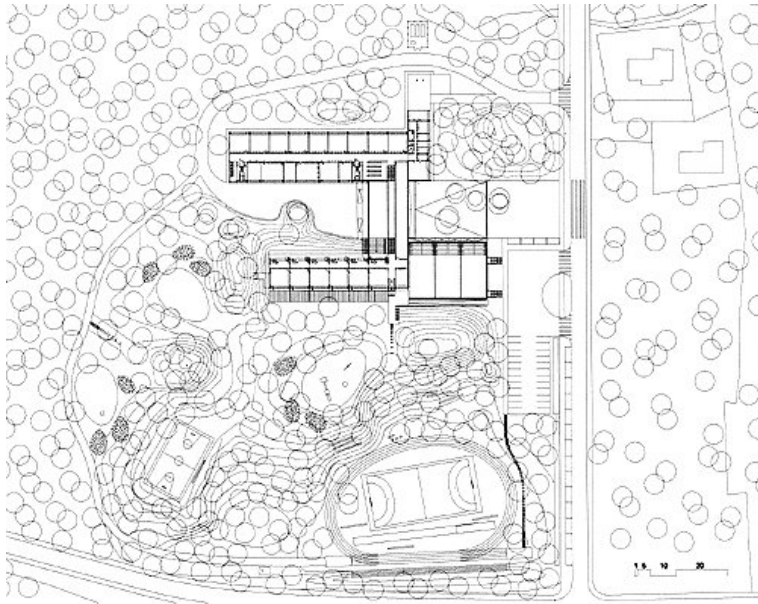
Bruttogeschossfläche: 5.500 m<sup>2</sup>

Baukosten: 3,5 Mio EUR

AUSZEICHNUNGEN

Piranesi Prize 2002, Plečnik's Prize 2003

Elementary School „Ob Rinži“



site plan