



© Gerald Zugmann

The Alte Donau apartment park is composed of several high-rise buildings clustered close together – until recently an unusual configuration in Vienna. Coop Himmelb(l)au's apartment building stands next to those of Peichl+Weber and NFOG and is surely the most spectacular one in this area: over 80 m high, with 70 apartments and 9 offices distributed among 25 floors.

The south side of the building breaks loose from the cubical form that defines its shape from a northern vantage point: a slanting glass body, tapering off towards the ground, is positioned in front of – or rather docks up against – the structure. The form was developed in consideration of wind and weather conditions.

The sky lobby on the ninth floor with a floor space of 350 m² is a communal area for all residents. The free space in front of it, enclosed by the slanting glass façade, is continued all the way up to the 22nd floor. All balconies, loggias and terraces protrude into this conservatory, glassed-in from three sides. Metal partitions create privacy and the balustrades of the balconies serve as smoke barriers in the event of fire.

On the roof, a square so-called „black box,“ or „air box,“ continues the slant of the southeast side of the building. A connecting interior shaft, the glass façade and the open space behind it make the building a low energy structure. Careful planning provides optimal conditions for heat storage, heat emission and ventilation: the slanting façade regulates the temperature with shutters for air supply, and internal, computer-operated aluminum lamellas.



© Markus Pillhofer



© Markus Pillhofer

Wohnturm

Kratochwjlestrasse 12
1220 Wien, Österreich

ARCHITEKTUR

Coop Himmelb(l)au

BAUHERRSCHAFT

SEG

TRAGWERKSPLANUNG

PORR Bau GmbH

FERTIGSTELLUNG

1998

SAMMLUNG

Architekturzentrum Wien

PUBLIKATIONSdatum

26. Oktober 1997



Wohnturm

The lack of supporting internal walls in all apartments creates an openness that is enhanced by the three-sided, slanting glass façade. In addition, all of the apartments face south.

DATENBLATT

Architektur: Coop Himmelb(l)au (Wolf D. Prix, Helmut Swiczinsky)

Mitarbeit Architektur: Sepp Weichenberger (PL), Gerhard Rieder, Rainer Enk, Mark Myndl, Martin Mostböck, Regis Pean

Bauherrschaft: SEG

Tragwerksplanung: PORR Bau GmbH

Fotografie: Gerald Zugmann, Markus Pillhofer

Bauphysik und Akustik: Pfeiler GmbH., Wien

Haustechnik-Planung: Vienna Öko Systems, Wien

Aufzugsplanung: Otis GmbH., Wien

Maßnahme: Neubau

Funktion: Wohnbauten

Planung: 1994

Ausführung: 1996 - 1998

PUBLIKATIONEN

Mark Steinmetz: Architektur neues Wien, Braun Publishing, Berlin 2006.

AUSZEICHNUNGEN

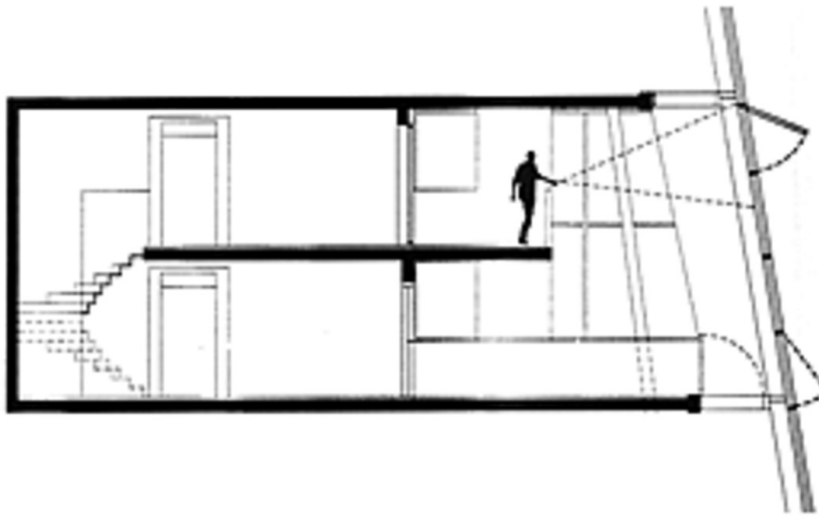
ZV-Bauherrenpreis 1999, Preisträger

WEITERE TEXTE

Die hohe Kunst der Schräge, Christian Kühn, Spectrum, Samstag, 14. November 1998

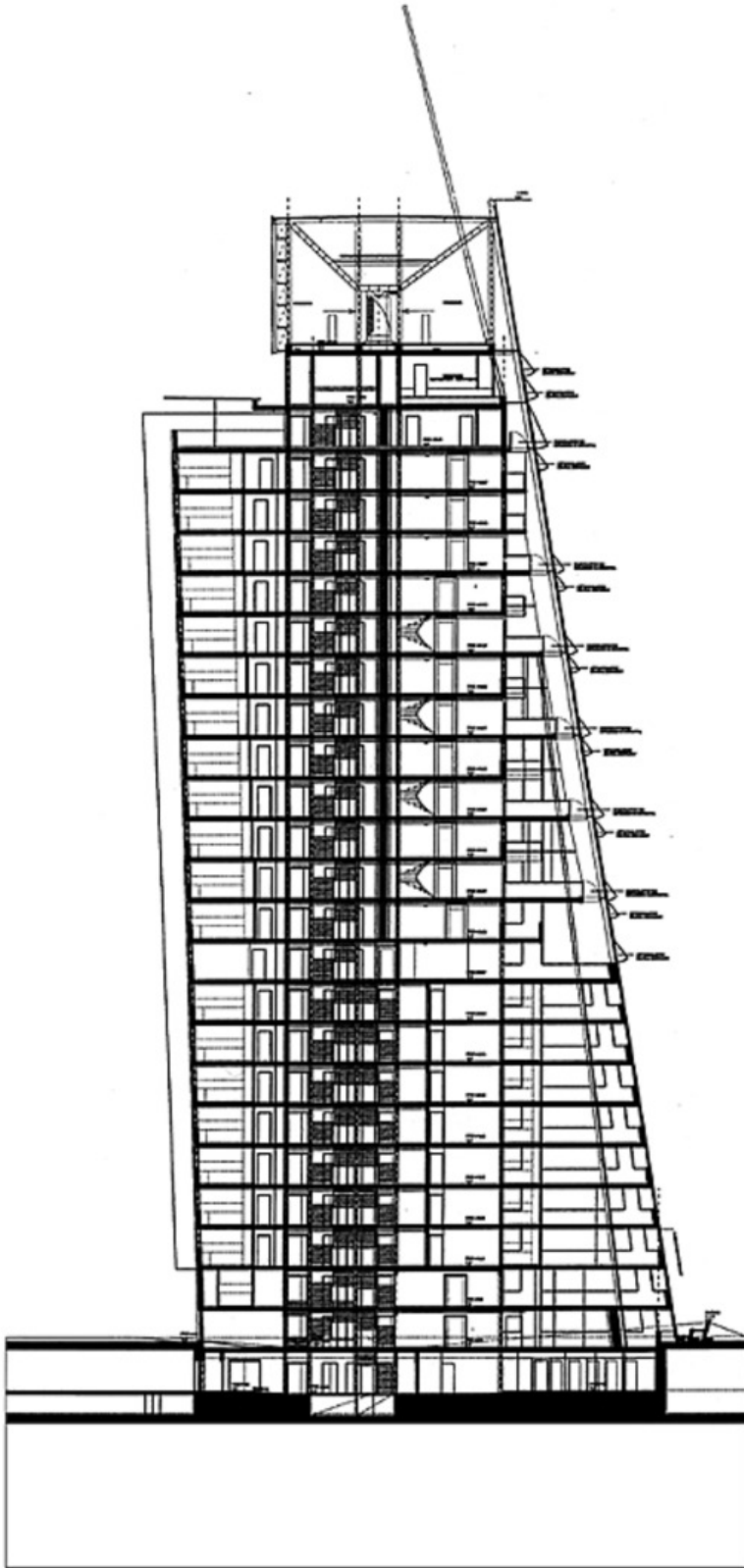
Neues Wohnen im Turm an der alten Donau, Gert Walden, Der Standard, Freitag, 2. Oktober 1998

Wohnturm



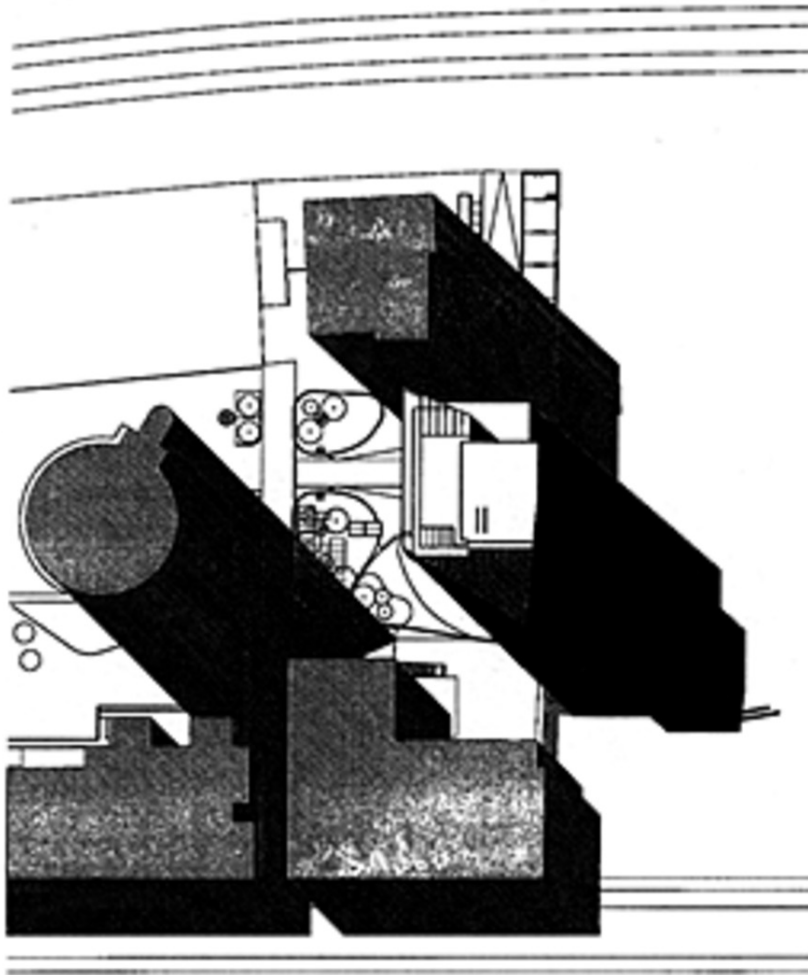
Schnitt

Wohnturm



Schnitt

Wohnturm



Lageplan