



© Bor Dobrin

To travel from the shore to the town built on a rock, one has to climb a steep staircase. To arrive from one square to the another staircase, and to traverse from the main square to a narrow street - yet another staircase! A typical stone house in the old town's centre, just behind the Stomorine bellfry, is offset by stairs made of stone. The staircase, or skalinada, links the ambience of three stories; while the galleries open toward direct sunlight. This is Skalinada house, from the sea to the panoramic terrace via Skalinada.

Skalinada house

51513 Omisalj, Kroatien

ARCHITEKTUR

multiPlan arhitekti

TRAGWERKSPLANUNG

Alan Sodnik

ÖRTLICHE BAUAUFSICHT

Ante Augustinovi?

FERTIGSTELLUNG

2004

SAMMLUNG

Architekturarchiv Slowenien

PUBLIKATIONSdatum

21. Januar 2007



© Bor Dobrin



© Bor Dobrin



© Bor Dobrin

Skalinada house

DATENBLATT

Architektur: multiPlan arhitekti (Aleš Žnidaršič, Katja Žlajpah)

Tragwerksplanung: Alan Sodnik

örtliche Bauaufsicht: Ante Augustinovič

Bauphysik: Peter Zargi

Maßnahme: Umbau

Funktion: Wohnbauten

Planung: 2003

Fertigstellung: 2004

Grundstücksfläche: 60 m²

Nutzfläche: 66 m²

Bebaute Fläche: 30 m²

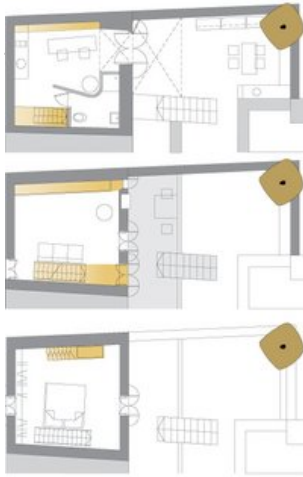
Baukosten: 24.000,- EUR

PUBLIKATIONEN

HIŠE, n. 28, Jutarnji list

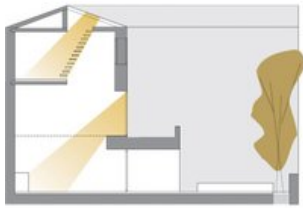


© Bor Dobrin



at/data/media/med_media/big/1169202322.jpg

Skalinada house



Skalinada plan