



© Ľubo Stacho

Administrative building of Montex company

Rovinka 590
90041 Rovinka, Slovakia

ARCHITEKTUR
Márius Žitňanský

FERTIGSTELLUNG
2005

SAMMLUNG
Architekturarchiv Slowakei

PUBLIKATIONSdatum
15. März 2007



Montex is a company specialized in process of machine technologies assembling. Now the main administrative building has been completed. The construction of the whole complex of buildings started by the execution of the metallurgical material storage for which Marius Žitňanský was awarded the Prize of ARCH magazine 2003. The straight wall that runs from the interior to the exterior in the form of dry stonewall fence in wirework grate became its main architectural feature. The stones in the wirework mesh that remind of Herzog's and de Meuron's Dominus Winery in Napa Valley; have been the most favourite topic of the first naïve critiques. The gradual development of the whole area insured continuity of all parts and towards the existing context of the village. The volume of the building designed in the second phase is divided in two by the gap with the staircase. The street level is occupied by the shop and storage; the upper floor is the administrative centre of the company. The wing adjacent to the square houses the offices of the company's management, downstairs there are the archive and the server, at the northern edge there is the meeting room. As a whole the building looks as a suspended, dynamic volume, which grows out of the dry stonewalls and makes an impression of floating above them. Žitňanský does not find delight in empty asymmetric variations in modern style. He never gave up his desire to narrate a story through architecture. At the same time he masters movement between Scylla of post-modern narration and Charybdis of minimalism. The second phase of construction of the Montex company headquarter was awarded the Slovak Chamber of Architects' CEZAR Prize 2006. (text: Mária Topolianska)



© Ľubo Stacho

**Administrative building of Montex
company**

DATENBLATT

Architektúr: Máriaš Žit'anský

Fotografie: Ĺubo Stacho

Funktion: Industrie und Gewerbe

Planung: 1998 - 2003

Ausföhrung: 2002 - 2005

Eröfönung: 2005

PUBLIKATIONEN

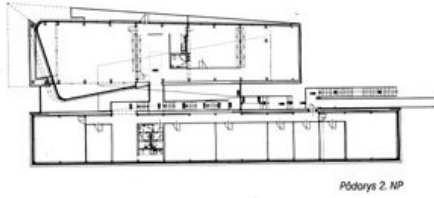
DULLA, M.: Kamenný dom v Rovinke, ARCH o architektúre a inej kultúre 8, 2003, Ĺ. 3, s. 28- 33.

DULLA, M.: Montex- druhá etapa, ARCH o architektúre a inej kultúre 11, 2006, Ĺ. 3, s. 10- 15.

MORAVĹÍKOVÁ, H.: Máriaš Žit'anský, Montex-Betriebsgebäude in Rovinka, Architektur.aktuell, 2006, Ĺ. 7- 8, s. 86- 97.

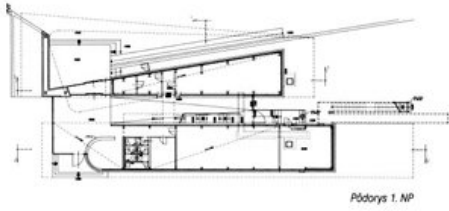
AUSZEICHNUNGEN

CE.ZA.AR 2006

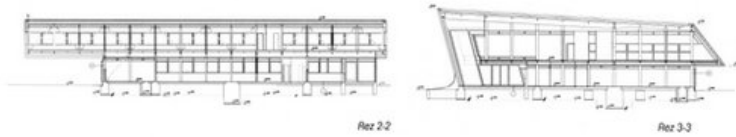
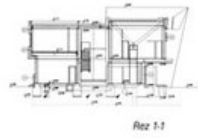


ia/big/1173964055.jpg

Administrative building of Montex company



Administrative building of Montex company, plan



Administrative building of Montex company, section