



© Paul Safko

The villa was commissioned by a client, who summoned a tender for a design of an ideal villa. An exhibition followed, and the winner was chosen afterwards. The realization was also presented at an exhibition. Northern slope has predetermined the basic layout of volume: two blocks, One put over the other. J. Bahna has always sensitively reacted to the architectural trends. In this case, he provides a mature association with what is offered by today's renaissance of architectural self-consciousness. Overlapping of the two blocks is a gesture of pure composition. Nevertheless, It reflects the key contextual requirement of the clients that the villa has to be directly connected with the terrain and facing south. Bahna does not give up architectural messages - asymmetry of modernism; interconnection between interior and exterior; an illuminated tube inspired by Le Corbusier... One can also find something of contemporary minimalism here. In the building documentation, there are also spatial or conceptual diagrams. But the creation of a good house as such is not reducible to a mere diagram. Emphasizing the conjunctural moment may sometimes seem an inevitable game, behind which the author slightly hides himself and stylizes. Similarly, one can also hide oneself behind diagrams like this. The house consists not only of diagrams, but also of lines, or, relations with the context at the same time. Last but not least, it also lies in a confident composition of blocks, drawing from good resources, an unbelievably perfect client... Matúš Dulla

Vila Linea

Novosvetská
Bratislava, Slowakei

ARCHITEKTUR

Ján Bahna

FERTIGSTELLUNG

2002

SAMMLUNG

Architekturarchiv Slowakei

PUBLIKATIONSdatum

24. April 2008



© Paul Safko



© Paul Safko



© Paul Safko

Vila Linea

DATENBLATT

Architektur: Ján Bahna

Mitarbeit Architektur: Miroslav Tomík, Stanislav Komár.

Funktion: Einfamilienhaus

Wettbewerb: 1998

Planung: 1999 - 2002

Ausführung: 2001 - 2002

Nutzfläche: 578 m²

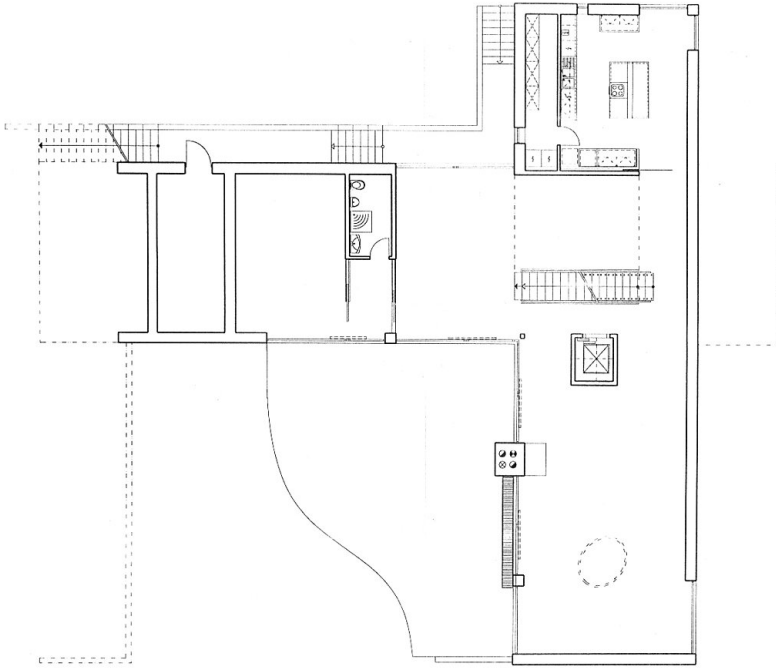
Bebaute Fläche: 2.357 m²

PUBLIKATIONEN

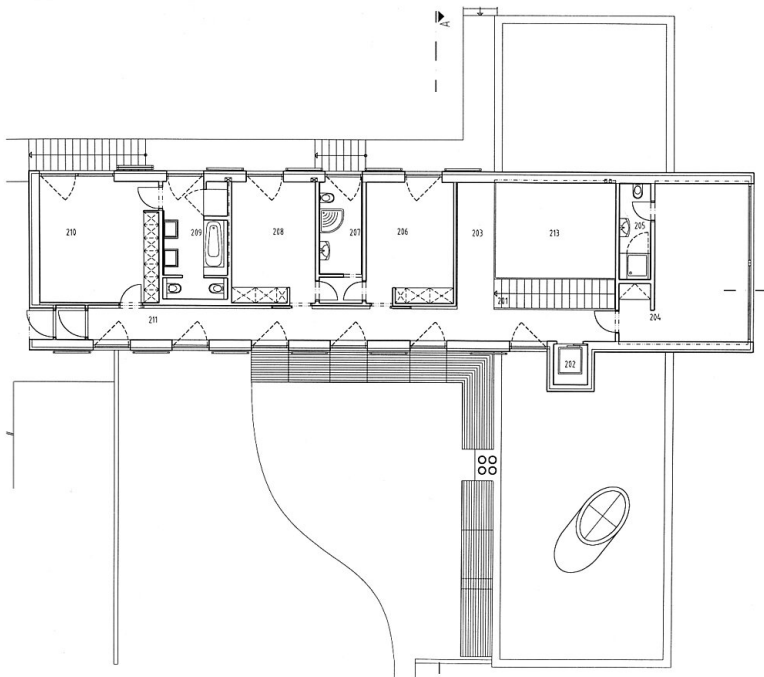
DULLA, Matúš: Vila Linea. ARCH 2003, ? . 5, s. 18-23.

Štúdia mestskej vily v Horskom parku-Novosvetská ulica. ARCH, 1999, ? . 5, s. 20- 21.

Vila Linea

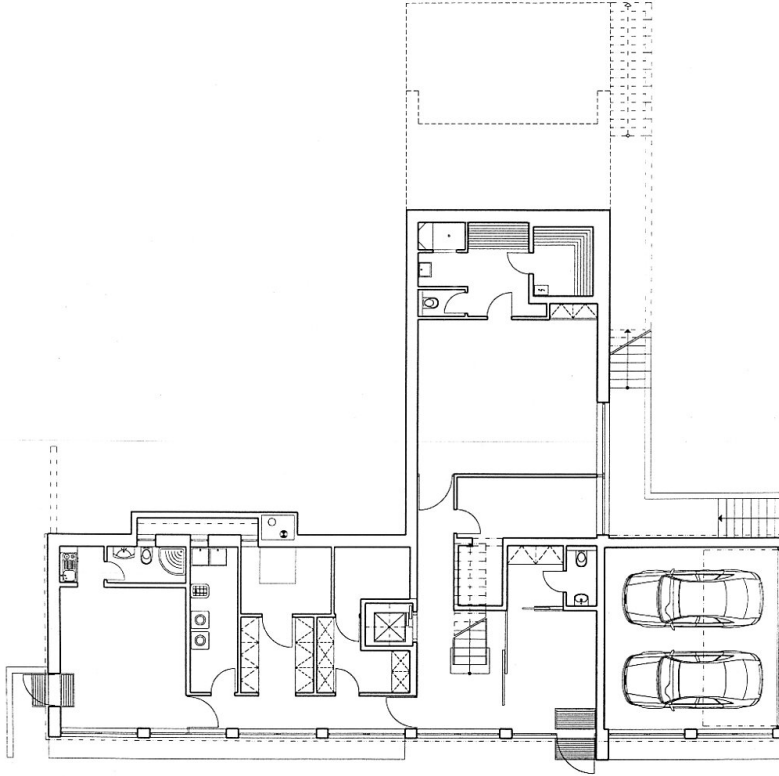


ground floor

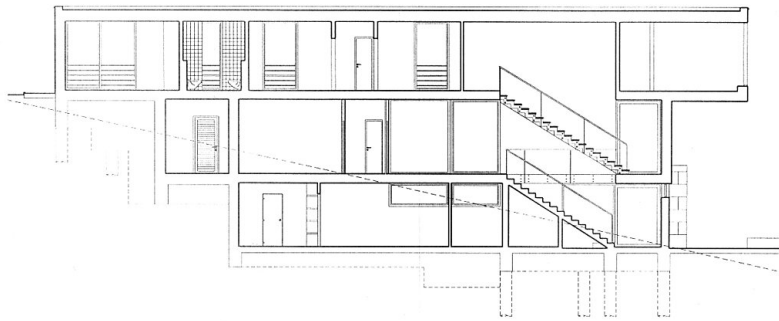


Floor

Vila Linea



Basement



Section