



© ?ubo Stacho

In the case of the new Slovak National Theatre the question of temporality is the key issue to understand the final result. The theatre as a whole is in spite of the long time span from its design to completion held in as abstract level as possible. During the twenty-five years of constant incompleteness the architects could have been inspired by many passing trends. Kusý – Pa?ák - Bauer, however, do not belong to those in favour of short-term provocations and experiments in architecture. For long years their tribute to the professional discourse is that of individualist search for the most durable core of architecture. Therefore the finally open building of the National Theater refers more to the abstract and monumental than to any actually fashionable way of expression. Matúš Dulla

New building Slovak National Theatre

Bratislava, Slowakei

ARCHITEKTUR
Peter Bauer

Martin Kusý
Pavol Pa?ák

FERTIGSTELLUNG
2007

SAMMLUNG
Architekturarchiv Slowakei

PUBLIKATIONSdatum
21. Oktober 2008



© ?ubo Stacho



© ?ubo Stacho



© ?ubo Stacho

New building Slovak National Theatre

DATENBLATT

Architektur: Peter Bauer, Martin Kusý, Pavol Paňák

Fotografie: Ľubo Stacho

Funktion: Theater und Konzert

Planung: 1981 - 2006

Ausführung: 1984 - 2007

Nutzfläche: 41.106 m²

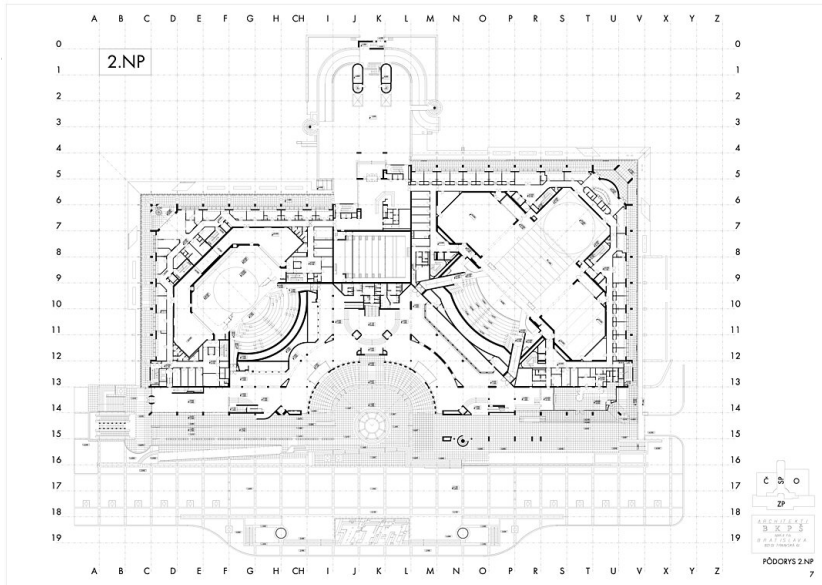
Bebaute Fläche: 10.237 m²

Umbauter Raum: 262.827 m³

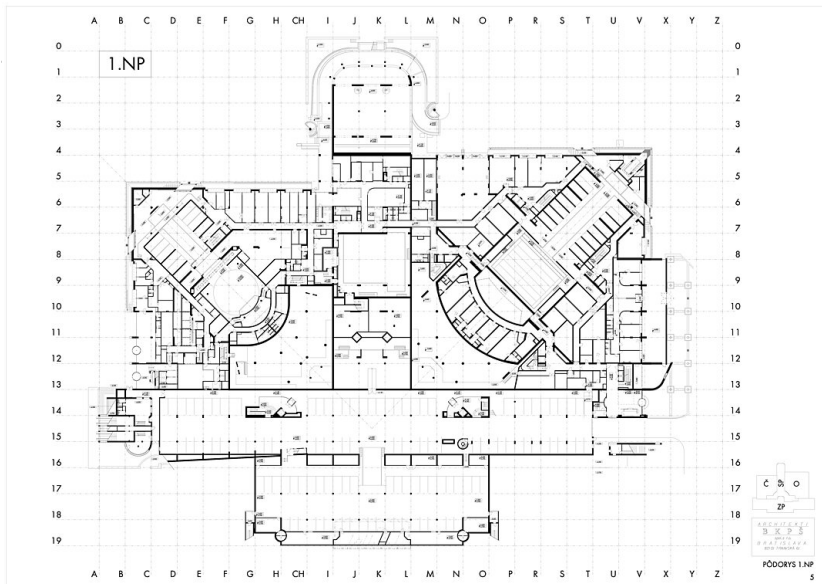
PUBLIKATIONEN

DULLA Matúš: Ľas a národný monument. ARCH 2007, 7. 6, s. 18 -21.

New building Slovak National Theatre



2th floor ground plan



1th floor plan