



© Tamás Bujnovszky

Brief History

This part of the once working-class district of Budapest was designed in bauhaus / post-classicist style, while socialist realism was represented here in the shape of the Community Centre Rákossy Mátyás, built in 1949 (as another trait of the communist leader's personality cult).

An architectural competition was held in 2003 for designing the complete reconstruction. The Hungarian firm Archikon was the winner who created three units of the building-group - the community centre, the light patio, and the auditorium, according to the prevailing trends in space planning and design. After the refurbishment the new building was presented in 2006.

Town-planning concept

The square and its surroundings create an integral townscape. The plant life gives an urban green character. The concept of the revitalisation was to gently emphasize the role of the community center by extending the inner functions to the outside. Restoring the original arcade and the steps and creating cascade-cubes on the sideways clearly assign the foreground of the building. This way the pavement has turned into a meeting point, as well as an illustrious entrance was generated.

Main elements of the refurbishment

The building group is divided into two, the streetside, three-storey building part, hosting public cultural services and the backside auditorium, which two are separated by a glass-facaded patio.

Existing building part

Existing levels remained unaltered. The previously added mezzanine in the entrance lobby was pulled down, establishing an elegant foyer. Through the reconstruction of the elevations the additional parts were pulled down and the original character and spirit of the forties' architecture was preserved and amplified.

The rear auditorium

After the reconstruction the whole building is organized around the multifunctional hall.



© Tamás Bujnovszky



© Tamás Bujnovszky



© Tamás Bujnovszky

József Attila Community Centre

József Attila tér 4.
1131 Budapest, Ungarn

ARCHITEKTUR
Archikon

TRAGWERKSPLANUNG
Endre Dulácska

ÖRTLICHE BAUAUFSICHT
Hérosz Zrt

FERTIGSTELLUNG
2006

SAMMLUNG
Architekturarchiv Ungarn

PUBLIKATIONSdatum
9. November 2008



József Attila Community Centre

Its new second floor's level is identical to the floor of the existing building— these two building parts can also act as one. The bulk of the building is covered with bright limestone.

Patio

The floor level of the patio ascends from the basement to the yards on both sides. The cubes of buildings are connected by means of small bridges. Retaining the vertical focuses (placing elevators instead of the former staircases) and expanding towards the new building part (bridges and new main staircase) the passages inside the building became integral. Each storey bears the character that best suits its designation. Different storeys are visually connected inside the glass-enclosed patio.

DATENBLATT

Architektur: Archikon

Mitarbeit Architektur: Balázs Horváth, Kata Niszler, Botond Benedek, Kriszta T. Major

Tragwerksplanung: Endre Dulácska

örtliche Bauaufsicht: Hérosz Zrt

Fotografie: Tamás Bujnovszky

Funktion: Parkanlagen und Platzgestaltung

Wettbewerb: 2003

Planung: 2004 - 2005

Ausführung: 2005 - 2006

Eröffnung: 2006

Grundstücksfläche: 3.134 m²

Bruttogeschossfläche: 5.879 m²

Nutzfläche: 4.603 m²

PUBLIKATIONEN

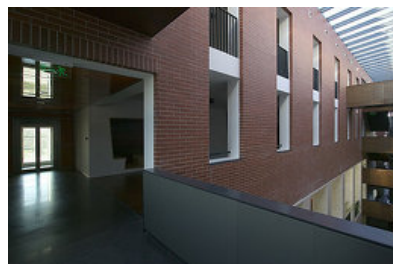
Octogon, 2006/6

Alaprajz 2007/01

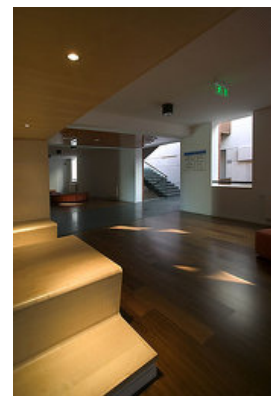
Magyar Építőművészet 2007/2



© Tamás Bujnovszky



© Tamás Bujnovszky



© Tamás Bujnovszky

József Attila Community Centre



© Tamás Bujnovszky



© Tamás Bujnovszky

József Attila Community Centre

