



© Paul Safko

Three family houses inhabit typical narrow and long plot usually delimited for a single one. Situated on a slight slope the houses seem to be just pavilions in the park. The architect occupies the middle one. The entire concept is dominated by the maximal view outside towards the adjacent hill with a little forest. The entire level of the house that serves as a living zone does not contain any doors. This reflects style of the family. Only a simple division wall can change the open plan housing into a four-roomed apartment. The possibility of spatial transformation is a guarantee of quality living today. The same flexibility is applicable to glass facades where sunshades are able to create an atmosphere of intimacy as well as continuity of inside and outside.  
Renata Štrpková

## House on columns

Bratislava, Slovakia

ARCHITEKTUR

**Zoran Michalčák**

FERTIGSTELLUNG

**2007**

SAMMLUNG

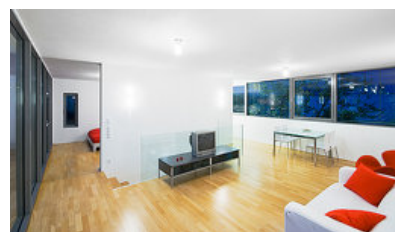
**Architekturarchiv Slowakei**

PUBLIKATIONSdatum

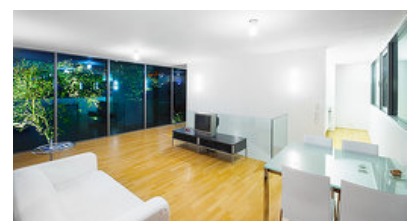
**26. November 2008**



© Paul Safko



© Paul Safko



© Paul Safko

## House on columns

### DATENBLATT

Architektur: Zoran Michalčák

Funktion: Einfamilienhaus

Planung: 2002

Ausführung: 2003 - 2007

Nutzfläche: 95 m<sup>2</sup>

### PUBLIKATIONEN

ŠTRPKOVÁ Renata: Levitujúci dom. ARCH 13, 2008, ? 4, s. 44- 47



© Paul Safko