



© Zsolt Batár

The plot used to have a little cottage with a huge terrace, the latter a favourite place for friend and family gatherings. The primary function of the new building was to serve as an appropriate setting for such social encounters. The architects were given complete freedom of choice within the loose confines of providing a building capable of fulfilling that function. (architects' text)

## Single-family house Budaörs

Szécheny u.  
2040 Budaörs, Ungarn

ARCHITEKTUR  
**ZSK Architects**

TRAGWERKSPLANUNG  
**Statiker Kft**

ÖRTLICHE BAUAUFSICHT  
**Profiszervezet Kft**

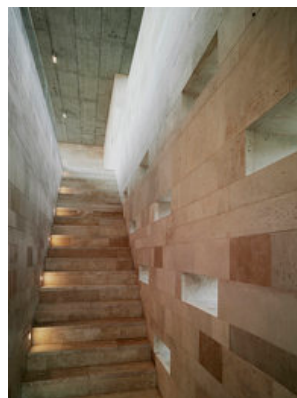
FERTIGSTELLUNG  
**2006**

SAMMLUNG  
**Architekturarchiv Ungarn**

PUBLIKATIONSdatum  
**17. Mai 2009**



© Zsolt Batár



© Zsolt Batár



© Zsolt Batár

## Single-family house Budaörs

## DATENBLATT

Architektur: ZSK Architects (Zsolt Zsuffa, László Kalmár)

Mitarbeit Architektur: Gábor Nagy, Dániel Vermes

Tragwerksplanung: Statiker Kft (Csaba Harsanyi)

örtliche Bauaufsicht: Profiszervezet Kft

Fotografie: Tamás Bujnovszky

Mechanical engineering - Tamás Fejes, László Szalóky (Kristály Klíma Plusz Kft)

Funktion: Einfamilienhaus

Planung: 2004 - 2005

Ausführung: 2005 - 2006

Grundstücksfläche: 1.139 m<sup>2</sup>

Nutzfläche: 115 m<sup>2</sup>

Bebaute Fläche: 170 m<sup>2</sup>

## PUBLIKATIONEN

Családi ház, 2007/2. ,16-25. o. (Budapest)

Alaprajz, 2007/2., 38-41. o. (Budapest)

Magyar Épít?m?vészeti, 2007/1, 19-22. o. (Budapest)

Átrium, 2007/4. ,66-70. o. (Budapest)

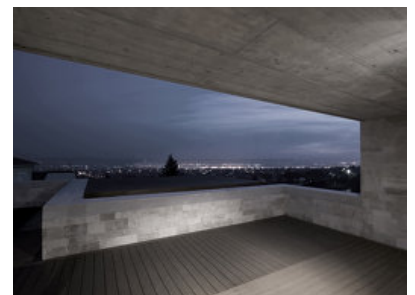
A10, 2007/01-02, 64-65. o. (Amsterdam)



© Zsolt Batár



© Tamás Bujnovszky



© Tamás Bujnovszky

Single-family house Budaörs



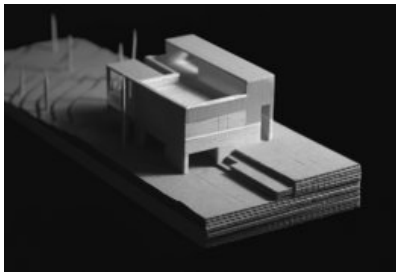
© Tamás Bujnovszky



© Tamás Bujnovszky

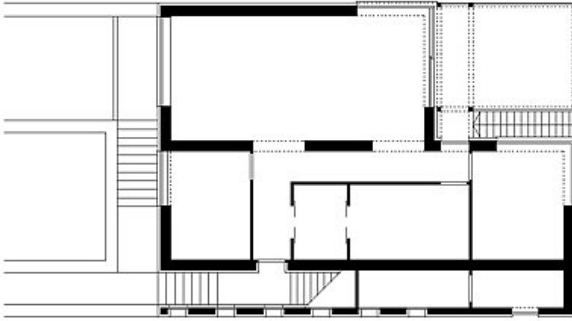


© Tamás Bujnovszky

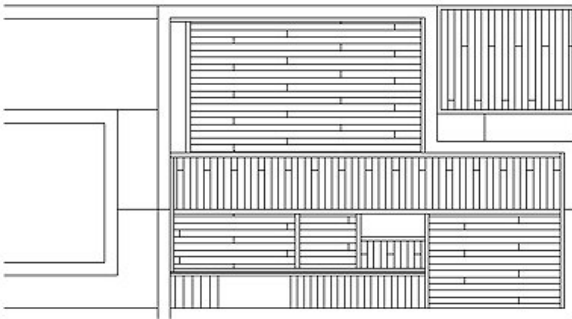


© ZSK Architects

Single-family house Budaörs

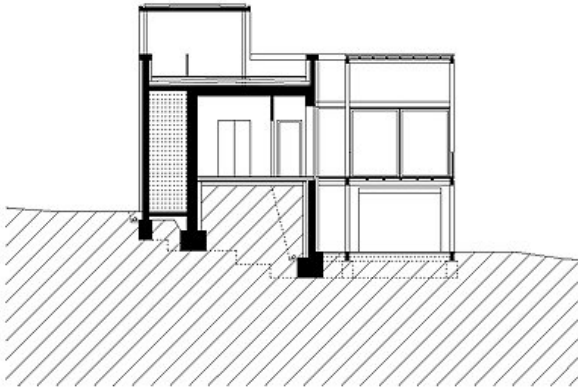


ground floor plan



roof terrace plan

Single-family house Budaörs



section