



© Tamás Bujnovszky

The task was to create a contemporary residential building filled with light. Considering the given circumstances as sun, shadow and the inner functional connections logically led to a diagonally open plan in this final form providing appropriate light and shadow for the living spaces. The moderate monolithic massing only toned by the entrance, the terrace area and by the slight glass strips. The chosen concrete material justify and intensify the massing. Main structure is thermal insulated reinforced concrete and gas-concrete blocks. Walls and roof are covered by prefabricated concrete panels. (architect's text)

Single-family house

Szent Imre utca 15
1162 Budapest, Ungarn

ARCHITEKTUR
ZSK Architects

TRAGWERKSPLANUNG
Statiker Kft

ÖRTLICHE BAUAUFSICHT
Profiszervezet Kft

FERTIGSTELLUNG
2008

SAMMLUNG
Architekturarchiv Ungarn

PUBLIKATIONSdatum
28. September 2009



© Tamás Bujnovszky



© Tamás Bujnovszky



© Tamás Bujnovszky

Single-family house

DATENBLATT

Architektur: ZSK Architects (Zsolt Zsuffa, Glória Papp)

Mitarbeit Architektur: Gábor Nagy

Tragwerksplanung: Statiker Kft (Csaba Harsanyi)

örtliche Bauaufsicht: Profiszervezet Kft

Fotografie: Tamás Bujnovszky

Mechanical engineering - Tamás Fejes, László Szalóky (Kristály Klíma Plusz Kft)

Funktion: Einfamilienhaus

Planung: 2007

Fertigstellung: 2008

Grundstücksfläche: 678 m²

Bruttogeschossfläche: 205 m²

Nutzfläche: 123 m²

Bebaute Fläche: 165 m²

AUSZEICHNUNGEN

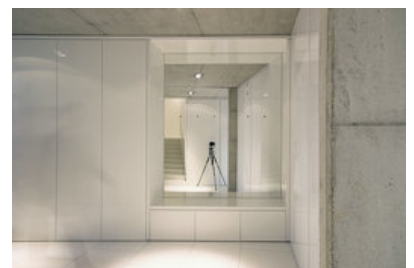
OCTOGON 2009/6. pp.13-16.



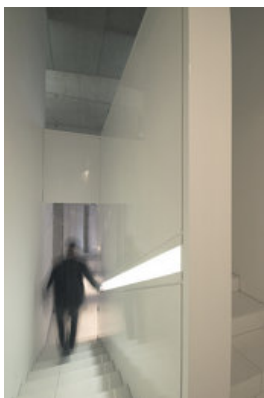
© Tamás Bujnovszky



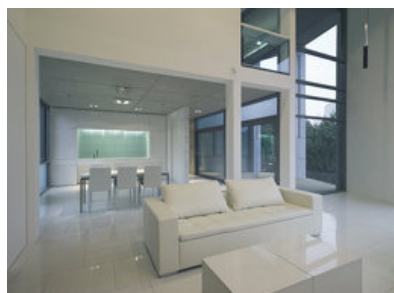
© Tamás Bujnovszky



© Zsolt Zsuffa

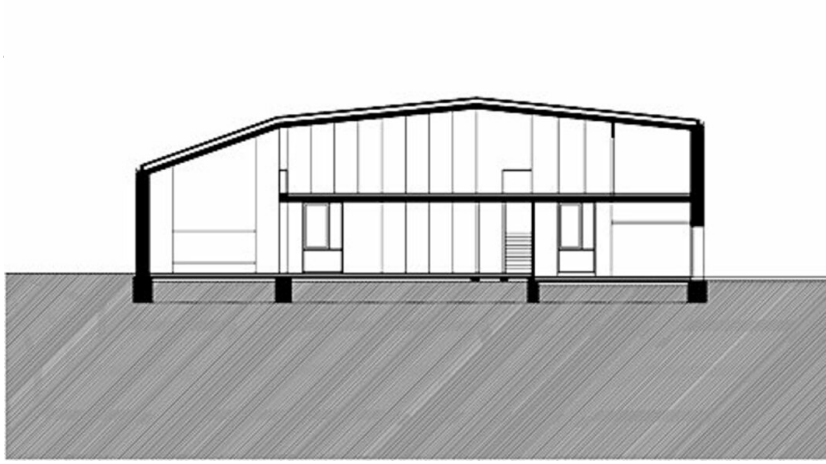


© Zsolt Zsuffa

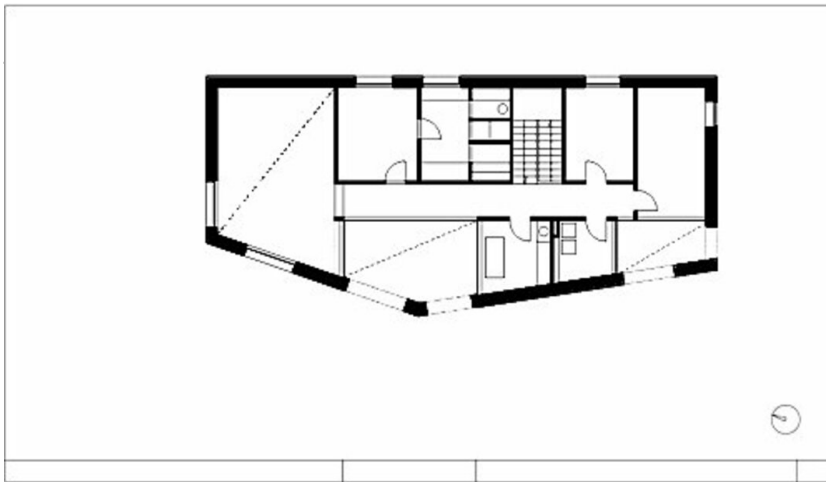


© Zsolt Zsuffa

Single-family house



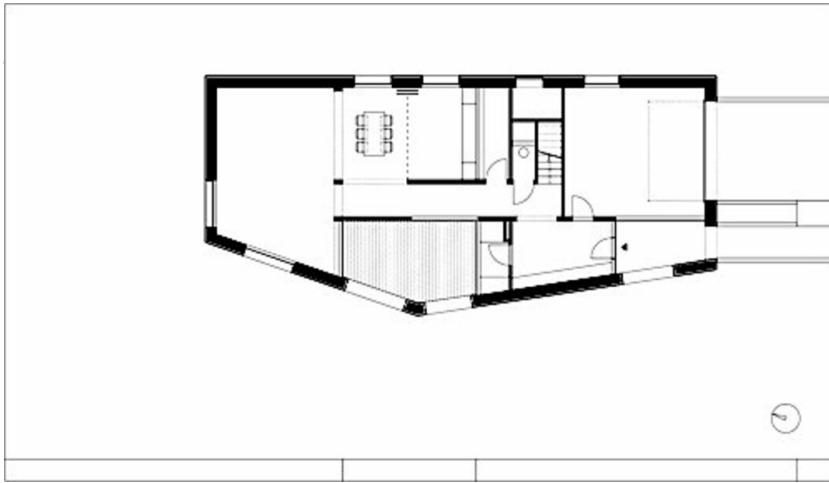
Schnitt



Grundriss



Ansicht



Single-family house

Grundriss