



© Péter Gyugyi

Miroslav Krleža Croatian Center for Education

Szigeti út 97.
7624 Pécs, Ungarn

ARCHITEKTUR

Pécsépterv Stúdió Kft

TRAGWERKSPLANUNG

Marosterv Mérnöki Iroda Kft.

LANDSCHAFTSARCHITEKTUR

Anikó Denke

FERTIGSTELLUNG

2008

SAMMLUNG

Architekturarchiv Ungarn

PUBLIKATIONSdatum

23. Juni 2010



The primary school, equipped with 10 classrooms on three floors, was designed by Ernő Tillai in 1963. (Named as Bolgárkert School)

The planning of reconstruction began in 2003 and it was fulfilled in four phases.

First Phase: Building of new hall and the education wing

The formation of the hall for 250 people, new classrooms and the dormitory for 80 persons makes it possible for the school to operate in a 12 classroom system (primary and secondary school together).

Thus the education centre is in conjunction with the ordinary ideas of the procurer party and serves as a cultural base of the local ethnic croatians. The school also serves as a home for exchange programs, conferences in school term breaks.

Second Phase: Reconstruction of the lobby and the kitchen.

The new arrangement of the kitchen (with maximum capacity of 300 portions) and the restaurant (for 80 people) creates the visual contact between the lobby and the restaurant. It was achieved through the termination of the janitor's apartment to make the community areas of the school reachable from the lobby.

Third Phase: Renovation of classrooms.

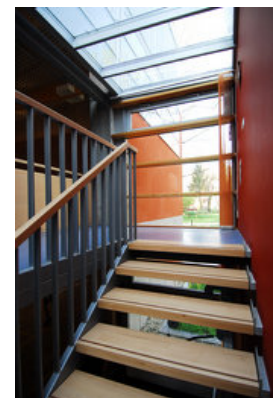
After the establishment of the new locker rooms, the old ones were reconstructed as vocational classrooms. All of the vocational class rooms and library were placed on the ground floor. The general classrooms were placed on the upper floors. Above the



© Péter Gyugyi



© Péter Gyugyi



© Péter Gyugyi

Miroslav Krleža Croatian Center for Education

lobby lies the administration and the teacher's room with a separated smoking room and a little kitchen. The old electricity and mechanical structure of the class room wing was renovated simillarly to the lobby and the kitchen.

Fourth Phase: Construction of the new gymnasium.

The original size of the gym was not according to the modern needs, thus a new gymnasium (with the dimensions of 12 m x 24 m x 8 m) was inevitable. The gym was accompanied with stands for 30 persons. (architects' text)

DATENBLATT

Architektur: Pécsépterv Stúdió Kft (András Köves, László Rádóczy (f), Csilla Bokor)

Tragwerksplanung: Marosterv Mérnöki Iroda Kft. (József Maros)

Landschaftsarchitektur: Anikó Denke

mechanical engineering - Urszula Jeszták (U-projekt Bt)

electrical engineering - Béla Hegyi

Funktion: Bildung

Planung: 2003 - 2007

Ausführung: 2004 - 2008

Eröffnung: 2008

Grundstücksfläche: 9.534 m²

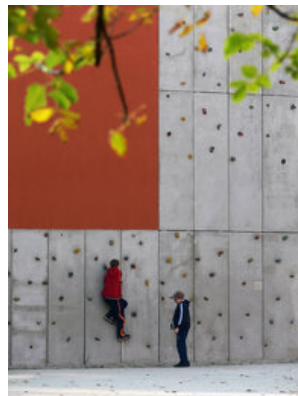
Bruttogeschossfläche: 4.303 m²

Nutzfläche: 3.846 m²

Bebaute Fläche: 2.563 m²



© Péter Gyugyi



© Péter Gyugyi



© Péter Gyugyi

Miroslav Krleža Croatian Center for Education

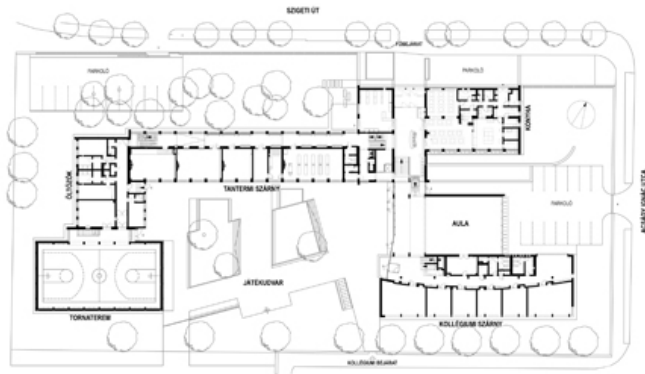


© Péter Gyugyi



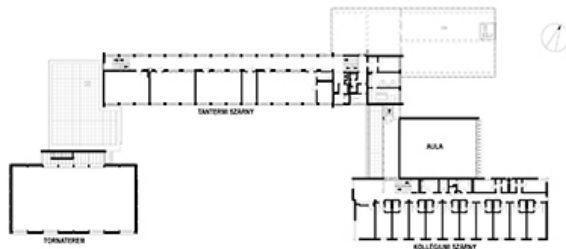
© Péter Gyugyi

Miroslav Krleža Croatian Center for Education

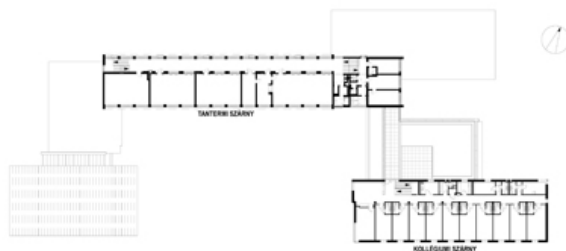


FÖLDSZINTIALAPRAJZ M 1:500

ground floor plan

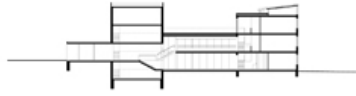


first floor plan



second floor plan

**Miroslav Krleža Croatian Center for
Education**



section