

Sofia Psychogeography

Bulevar Stefan Stambolov
1000 Sofia, Bulgarien

ARCHITEKTUR

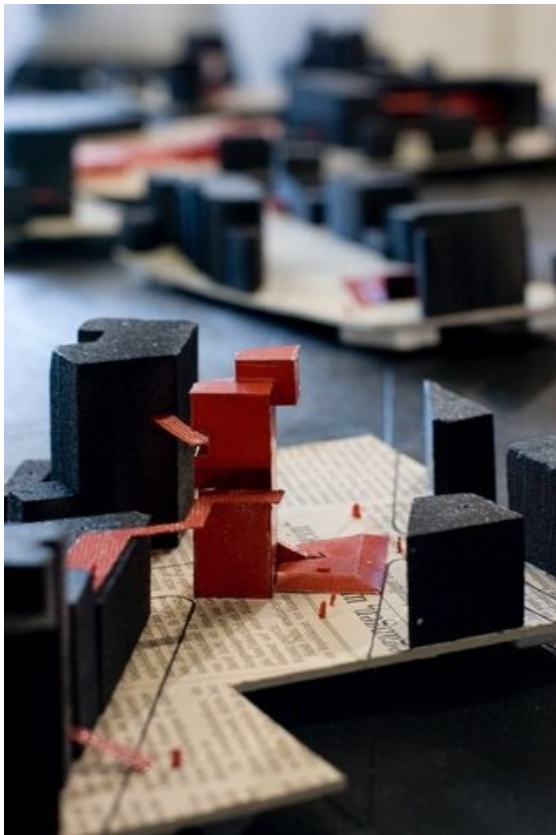
Matthias Hoffmann

SAMMLUNG

archdiplom

PUBLIKATIONSdatum

31. August 2010



© Matthias Hoffmann

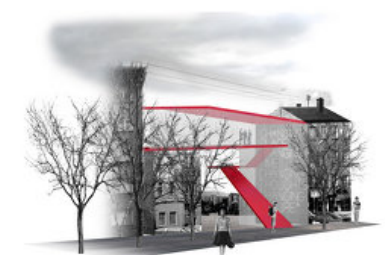
The task of this project consisted of a center for contemporary art in the area of the „women’s market“ in Sofia, a traditional quarter with one of Europe’s oldest street markets. Instead of building a monumental new and slick museum that would „upgrade“ the whole quarter, but destroy it’s unique charming character, inevitably forcing the less advantaged citizens out, this approach tries to work with the potential the quarter already has. The project consists of inserting various architectural interventions throughout the quarter that will make the development visible that the area will most likely undergo in the near future, due to its proximity to the centre. The interventions detour the common ways of the people in the quarter, this way creating an awareness of its hidden qualities. In the sense of the Situationists, the interventions offer new options for movement, that can be found and perceived personally. At the same time, the interventions contain museum uses so that the „flaneur“ is continuously confronted with contemporary art, this way blurring the border between art and everyday life. Matthias Hoffmann



© Matthias Hoffmann



© Matthias Hoffmann



© Matthias Hoffmann

DATENBLATT

Architektur / Entwurf: Matthias Hoffmann

Funktion: Museen und Ausstellungsgebäude

Planung: 2009

AUSZEICHNUNGEN

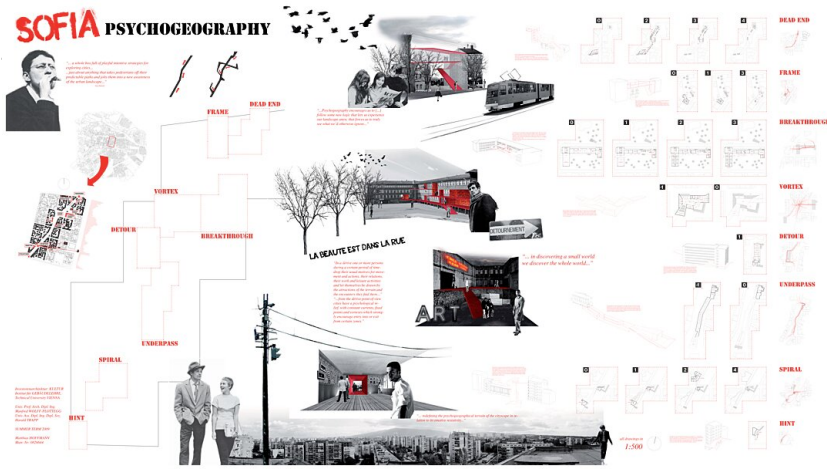
Entwerfenpreis SS 2009, Preisträger



© Matthias Hoffmann



© Matthias Hoffmann



Sofia Psychogeography

Sofia Psychogeography