

© Tamás Czígány

As the part of the Pilgrim House Complex, there is a small chapel in the woods for reserved and quiet contemplation and individual prayer. Its floor area is 20 square metres and its height is 9 metres. It is constructed by horizontal larch beams, the openings are given by its piling system. The beams are joint to each other by hard wood pegs. There are no doors, no windows, no heating or artificial lighting here. The wind blows and the sun shines through it. An in-between space in nature. The contractor, the architects from the office and architectural students built it together themselves. Soulful days those were. (architects' text)

Chapel in the woods

Cseider völgy
9090 Pannonhalma, Ungarn

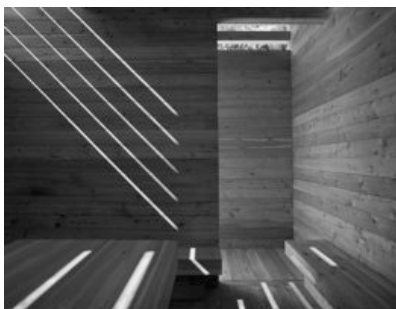
ARCHITEKTUR
CZITA Architects

BAUHERRSCHAFT
Benedictine Archabbey of Pannonhalma

FERTIGSTELLUNG
2010

SAMMLUNG
Architekturarchiv Ungarn

PUBLIKATIONSdatum
19. Juni 2011



© Tamás Czígány



© Tamás Czígány



© Tamás Czígány

Chapel in the woods

DATENBLATT

Architektur: CZITA Architects (Tamás Czigány, Róbert Papp, András Cseh)

Mitarbeit Architektur: Györgyi Tóth, Réka Juhász, András Cseh

Bauherrschaft: Benedictine Archabbey of Pannonhalma

Funktion: Sakralbauten

Planung: 2009

Fertigstellung: 2010

Grundstücksfläche: 30.731 m²

Bebaute Fläche: 20 m²

AUSFÜHRENDE FIRMEN:

Bio-Ház Team Kft.

PUBLIKATIONEN

Metszet, 2011/2

Intarzia, 156 - 2011.01.

In nextroom dokumentiert:

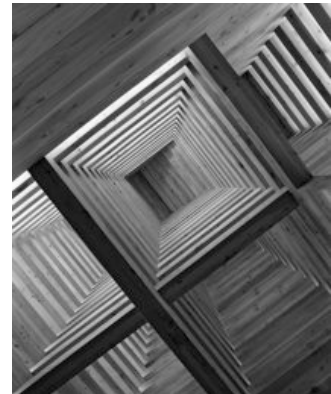
Tamás Nagy, Béla Pazár: Contemporary Architecture of Pannonhalma, Benedictine Archabbey of Pannonhalma, Pannonhalma 2011.



© Tamás Czigány



© Tamás Czigány

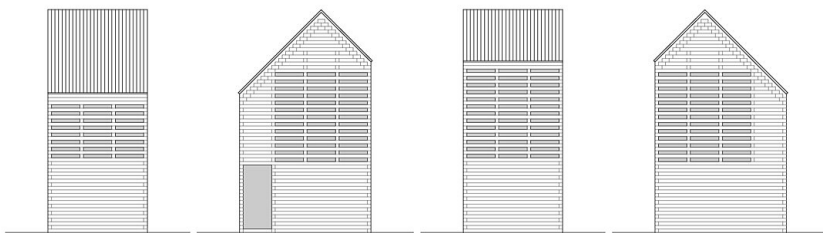
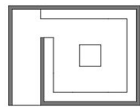


© Tamás Czigány

Chapel in the woods



site plan



chapel / floor plan, section, facade