



© Mina Piš?evi?

House A is a reconstructed family house from 1925 and part of the cultural and tourist complex of the Terra Panonica Company in Mokrin.

House A serves as a guest house and consists of a communal dining room with a porch, two salons, a master apartment and a kitchen on the ground level, five apartments and a terrace on the upper level and a vine cellar with a club space in the underground.

The challenge that architects of the Studio AUTORI faced was how to transform both the functional scheme and the general appearance of the house, to suit the new functional and aesthetic requirements, but still to preserve the original qualities of the ambient. The architects met this challenge by concentrating all of the activities and views in one central space on the ground level, from which the rest of spaces derive in a sort of free flow. They created an open central space to contain a dining room, acting as a transitory area between the exterior and the interior of the house, offering a balance between private and social activities.

The architects maintained the affinity to the local context by creating simple bright spaces with some curious detailing, such as a swing or a lather, which one may encounter in one of the apartments, adding attraction to the otherwise humble vernacular ambient. Also the recycled furniture, from old Yugoslav government offices and salons, adds a sense of continuity and luxury which gives the whole ambient a unique charm.

House A

Svetog Save 25
23305 Mokrin, Serbien

ARCHITEKTUR
Studio Autori

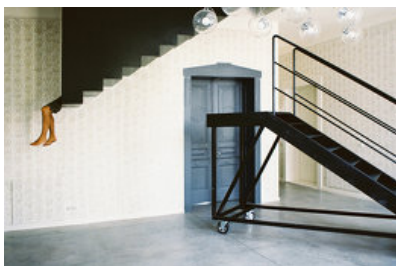
BAUHERRSCHAFT
Terra Panonica doo

TRAGWERKSPLANUNG
Mega Plus doo

FERTIGSTELLUNG
2012

SAMMLUNG
360BEOGRAD

PUBLIKATIONSdatum
26. April 2013



© Mina Piš?evi?



© Mina Piš?evi?



© Mina Piš?evi?

House A

House A represents a well thought response to the issues and challenges of the contemporary environments in regards to the continuity of tradition and local values, proving that being contemporary does not necessarily mean being in conflict with local heritage and accumulated experience.

An earlier version of this text was published in A10 #48. (Text: Miodrag Nini?)

DATENBLATT

Architektur: Studio Autori (Dušan Nenadović, Maja Trbović, Dijana Novaković, Aleksandra Nikitin)

Bauherrschaft: Terra Panonica doo

Tragwerksplanung: Mega Plus doo

Mitarbeit Tragwerksplanung: Dragan Nikolić und Siniša Luković

Funktion: Gemischte Nutzung

Fertigstellung: 2012

Grundstücksfläche: 3.500 m²

Nutzfläche: 560 m²

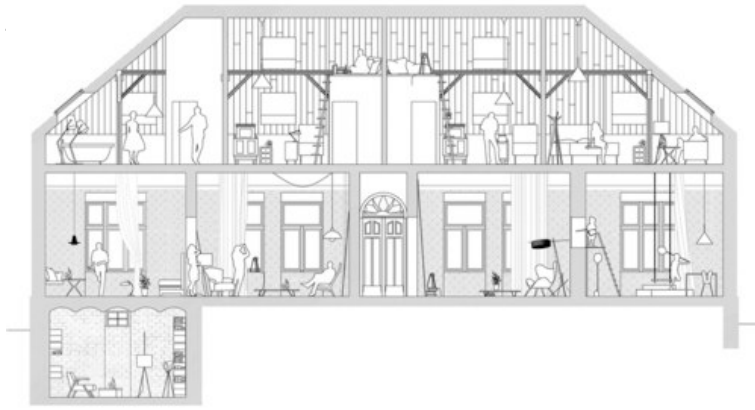
PUBLIKATIONEN

A10, new European architecture #48, english, A10 publishers, Amsterdam 2012

AUSZEICHNUNGEN

Award of the 35th Salon of Architecture in the category Interior Architecture, Belgrade, 2013

House A



Section