



© Margherita Spiluttini

The term „dome“ may be misleading, since one expects a – in one way or another – vaulted structure. However, what one finds is not disappointing. The square building of the entertainment center could more accurately be described as a „boxed-up, very abstracted natural landscape.“ The edifice is composed of three main parts: the transparent skin of the façade, 15 blocklike solitaires which contain movie theaters and are piled one upon the other in the form of steps, and the spaces between these blocks, where shops, restaurants and bars are connected by an intriguing system of paths.

The theater blocks, painted according to a color scheme by Oskar Putz, show the negative outline of their rows of seats into the interior of the „dome,“ creating slanting, upside down tiers under which people can mill around. The intricate three-dimensionality of the space is enhanced by the many different horizontal and vertical perspectives one can glimpse between the piled up theater blocks and outside through the transparent façade. The multi-colored, foliated glass sheets of the façade create an interesting overlapping of light and color and encase the block landscape of the interior from three sides.

The blocks also protrude through the roof, where they form a gigantic rocklike landscape that is open to visitors as well. A transparent steel bridge connects the pleasure dome to the mall in the opposite gasometers.

For the architects, an important aspect of the design was to spatially juxtapose the grassy embankments of the gasometers' truncated cone foundations with the smooth, transparent hull of the entertainment center.

Entertainmentcenter Gasometer

Guglgasse 43
1030 Wien, Österreich

ARCHITEKTUR
RLP Rüdiger Lainer + Partner

BAUHERRSCHAFT
GCE Gasometer Kino Center

TRAGWERKSPLANUNG
FCP

KUNST AM BAU
Oskar Putz

FERTIGSTELLUNG
2001

SAMMLUNG
Architekturzentrum Wien

PUBLIKATIONSdatum
12. November 2001



© Margherita Spiluttini



© Margherita Spiluttini



© Margherita Spiluttini

Entertainmentcenter Gasometer

DATENBLATT

Architektur: RLP Rüdiger Lainer + Partner

Mitarbeit Architektur: Christian Fötschl, Gottfried Seelos, Michael Lange, Tadeusz Chimiak, Andrea Seidling, Jaroslav Travnicek, Lorenzo Rossi, Michael Pitsch, Lisa Zentner, Günther Barczik, Christian Knud Nielsen

Bauherrschaft: GCE Gasometer Kino Center

Tragwerksplanung: FCP

Kunst am Bau: Oskar Putz

Fotografie: Margherita Spiluttini

Haustechnik-Planung: ZFG-Projekt

Bauphysik: Büro Pfeiler GmbH., Graz

Lichttechnik: Licht Lex

Farbgestaltung: Oskar Putz

Maßnahme: Neubau

Funktion: Sport, Freizeit und Erholung

Planung: 1997

Ausführung: 1999 - 2001

PUBLIKATIONEN

Mark Steinmetz: Architektur neues Wien, Braun Publishing, Berlin 2006.

werk, bauen + wohnen, Nach innen, Verlag Werk AG, Zürich 2002.

AUSZEICHNUNGEN

ZV-Bauherrenpreis 2001, Preisträger

WEITERE TEXTE

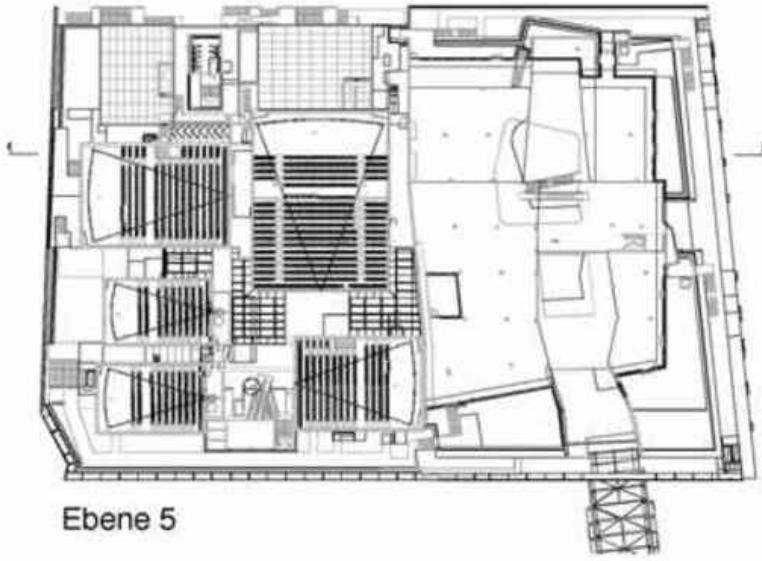
Wenn draussen noch drinnen ist, Walter Zschokke, werk, bauen + wohnen,
Donnerstag, 10. Januar 2002

Bauen beginnt immer bei 0:0, Walter Zschokke, Spectrum, Samstag, 29. September
2001

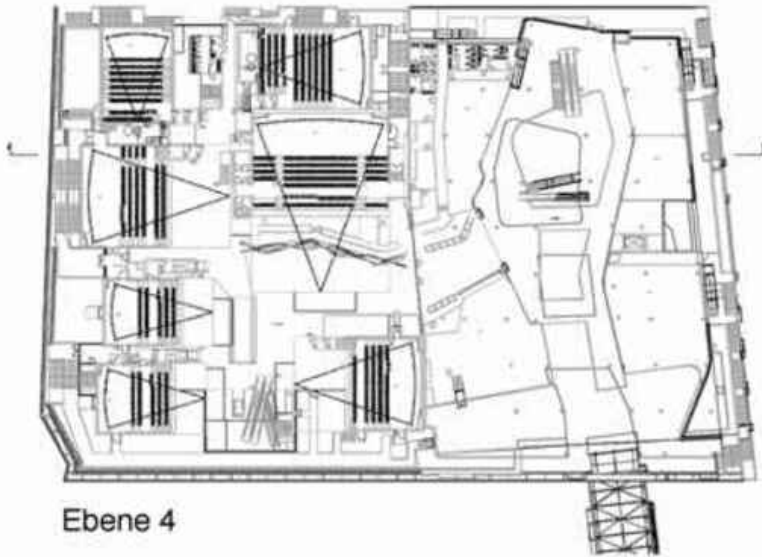


© Margherita Spiluttini

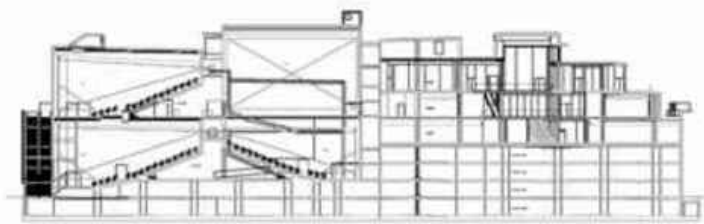
Entertainmentcenter Gasometer



Ebene 5



Ebene 4



Schnitt B-B

Projektplan