



© Nikolaus Similache

The „Compact City“ development, along with its residents, the so-called „home workers,“ is a pilot project for special ways of living. The winning project of the Otto Wagner Prize for Urban Planning of 1998, it was based on urban planning research and site development studies.

BUS is a group of architects that examines the „potential combinations among the hybrid structures“ of living and working in a space adapted for both. Hence, the inclusion of working places within, or adjacent to, the apartments is the defining element of the facility which contains 59 apartments, 12 artists' studios, 10 workshops with additional exterior working spaces, 4 small businesses, restaurants, offices, retail stores and playgrounds.

The positive effects of this architectural experiment on urban planning and social structures are numerous: the „home workers“ rhythm of living revitalizes a previously mainly residential area; the notion of dwelling as such loses its mono-functional character and becomes an integral part of a social network; a higher demand on pedestrian pathways results in a significant reduction of motorized traffic; the building façades can be for advertising; green areas serve as valuable islands for recreation and creative activities.

The idea of combining an ecological urban development with this merged living and working space, in order to counteract suburban ghettoization, is undoubtedly an important step towards redefining urban growth. (Text: Gabriele Kaiser)

## Compact City

Donaufelder Straße 101  
1210 Wien, Österreich

ARCHITEKTUR  
**BUSarchitektur**  
Rainer Lalics

BAUHERRSCHAFT  
**SEG**

TRAGWERKSPLANUNG  
**K+S Ingenieure**  
Ewald Pachler

FERTIGSTELLUNG  
**2001**

SAMMLUNG  
**Architekturzentrum Wien**

PUBLIKATIONSdatum  
**7. Januar 2002**



© Nikolaus Similache



© Nikolaus Similache



© BUSarchitektur

**Compact City**

## DATENBLATT

Architektur: BUSarchitektur (Laura P. Spinadel, Claudio J. Blazica), Rainer Lalic  
Mitarbeit Architektur: M. Jadric (bis Juni 1997), A. Schmoeger, T. Kogelnig, G. Müller,  
H. Niessner, D. Schwaag, M. El Khafif, K. Nabielek, C. Nuhsbaumer, Y. Haberlandt, S.  
Pfefferle, T. Lüdtko, K. Rätzsch, P. Krähenbühl, N. Berger  
Bauherrschaft: SEG  
Tragwerksplanung: K+S Ingenieure, Ewald Pachler  
Fotografie: Nikolaus Similache

Verkehrsplanung : Rosinak & Partner, Wien  
Bauphysik: Büro Pfeiler GmbH., Graz  
Haustechnik-Planung: VÖS

Maßnahme: Neubau  
Funktion: Wohnbauten

Planung: 1993  
Ausführung: 1999 - 2001

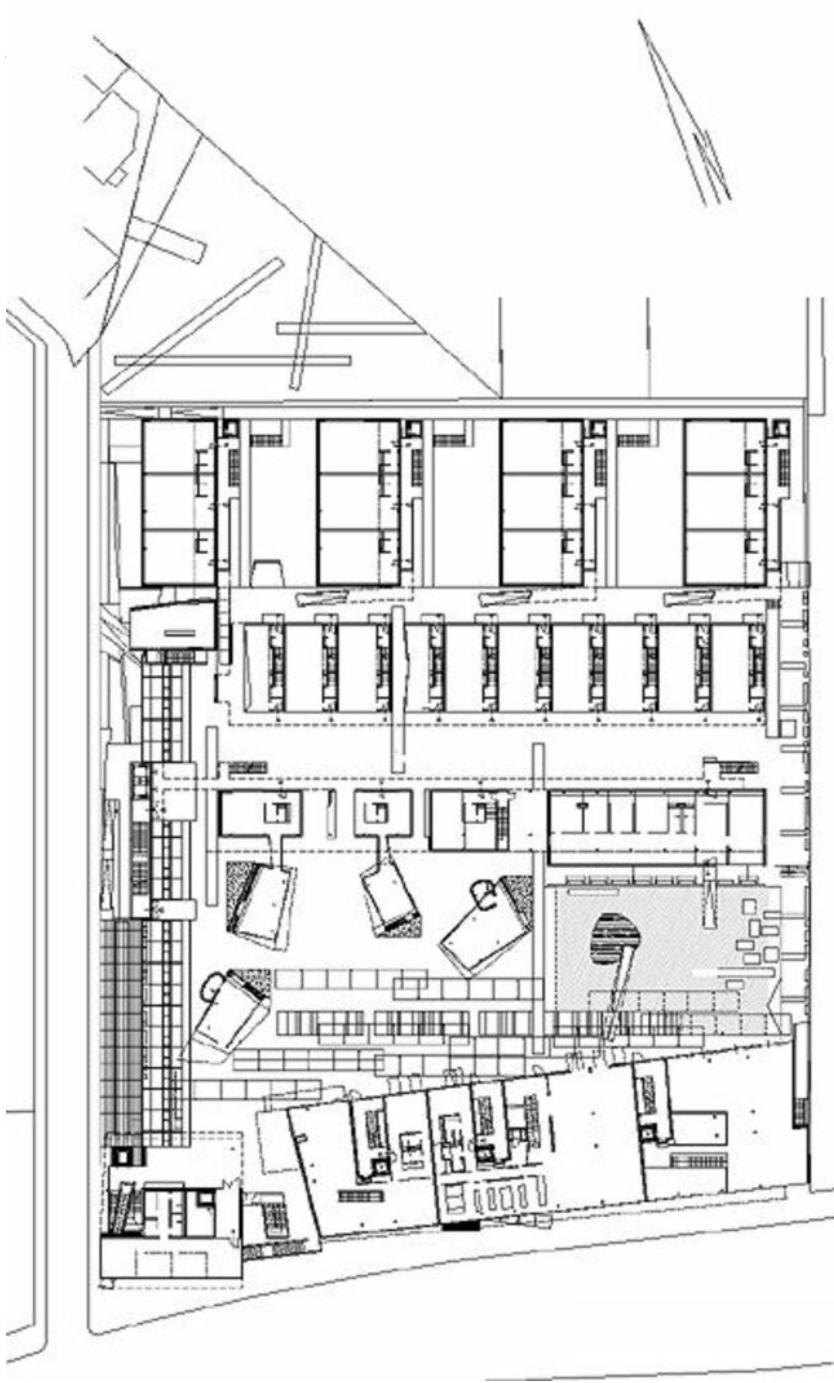
## PUBLIKATIONEN

Mark Steinmetz: Architektur neues Wien, Braun Publishing, Berlin 2006.  
architektur.aktuell 03.2002 building society, SpringerWienNewYork, Wien 2002.

## WEITERE TEXTE

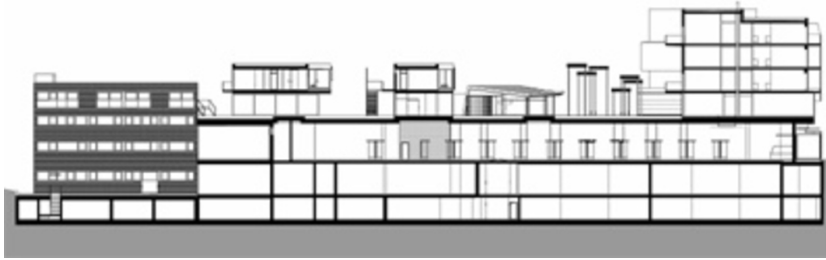
Wie man heute eine Stadt baut, Liesbeth Waechter-Böhm, Spectrum, Samstag, 29.  
Dezember 2001  
Die Werkstatt-Büro-Wohnung, Ute Woltron, Der Standard, Samstag, 10. November  
2001

Compact City



Grundriss

Compact City



Schnitt